



LANDWÄRME. **BIOMETHANE FOR EUROPE.**

THE SMARTER NATURAL GAS.

BIOMETHANE. EUROPE'S SMARTER OPTION.



THE CLIMATE FRIENDLY ENERGY ALL-ROUNDER.

Biogas upgraded to natural gas quality – called biomethane or bio natural gas – is the environmentally friendly alternative to fossil-based natural gas.

Biomethane can be fed into the existing natural gas grid, which allows for energy-efficient and cost-effective transport. This way, decentrally produced renewable energy can easily be used in urban areas.

Biomethane is more versatile than any other renewable source of energy. It can be applied in industry and private households for heating purposes, in combined heat and power (CHP) processes, and in the mobility sector to fuel natural-gas-powered vehicles.

THE ADVANTAGES OF BIOMETHANE AT A GLANCE.

- Excellent eco-balance
- Easy transport via natural gas grid
- Applicable for transport, heat generation, and CHP
- Financial incentives and various subsidies

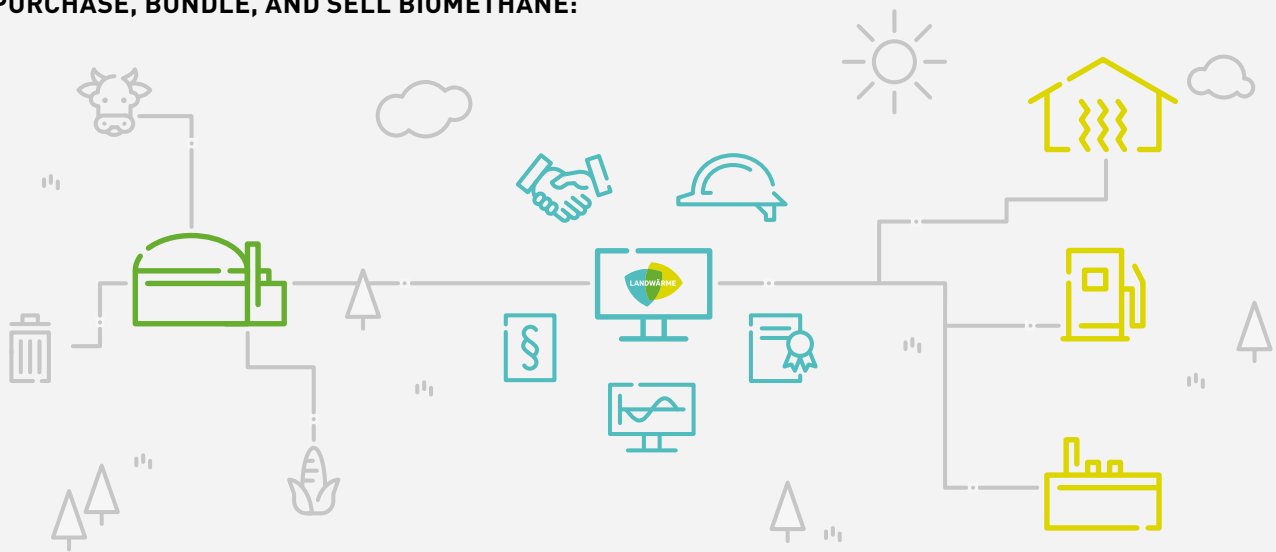
BIOMETHANE FOR YOUR CHP PLANT.

Biomethane is the ideal substitute for natural gas in cogeneration, as no technical changes are required. Feed-in tariffs and other support schemes promote the production of renewable heat and power in many European countries.

BIOMETHANE FOR YOUR CNG FUELLING STATION.

Biomethane can be employed as a regenerative fuel in the mobility sector, almost at the same price as natural gas. Quota systems and tax policies financially support the utilisation of the gas. No technical modifications are necessary; any natural gas vehicle can be fuelled with biomethane.

WE PURCHASE, BUNDLE, AND SELL BIOMETHANE:



BIOMETHANE FOR YOUR GAS CUSTOMERS.

Upgrade your energy portfolio by including eco-friendly biomethane. Natural gas can be blended with biomethane in any ratio. This way, customers can ink green their gas consumption to the desired extent.

YOU PRODUCE BIOMETHANE?

We procure biomethane from more than 80 biogas upgrading plants in Europe and operate several plants in Germany. Become one of our suppliers and benefit from synergetic effects.

INDIVIDUAL SERVICES TAILORED TO YOUR NEEDS.

We deliver all qualities and quantities of certified biomethane: for the use as green gas, as biofuel, or in the form of certificates. We provide the right gas product according to your requirements.

Are you a biomethane producer? We analyse the best possibilities of utilising your gas. We purchase all kinds of gas directly from the biomethane plant. Benefit from individual sales contracts and a fair remuneration. We also provide support regarding certification, gas transport, and balancing processes.

INTERNATIONAL REFERENCES.

LANDWÄRME – EUROPE'S BIOMETHANE PROVIDER.

We supply numerous energy providers, public utilities, and CNG filling stations with certified biomethane. Moreover, we provide extensive knowledge and expertise to our customers – from balancing group management as well as portfolio management to biomethane supply.



The Dutch company Reconnect offers an innovative, cloud-based platform connecting the generation and consumption of renewable energies.

Here, all involved parties – from producers to dealers to consumers – can follow and manage the entire value chain of every consumed MWh of renewable energy.

In cooperation with Reconnect, we will enable the transparent supply with biomethane from our portfolio for Dutch consumers in the future.



Together with Magyar Cukor Zrt., Hungarian's largest sugar producer, Landwärme implemented the first feed-in project in Hungary.

Biogas which is made of organic byproducts and residues from the sugar production is upgraded to natural gas quality.

Landwärme purchases the certified biomethane and trades it across Europe as green gas or biofuel.

In addition, we provide ongoing support for accounting, balancing, and verification processes.



ABOUT LANDWÄRME.

Landwärme is a biomethane supplier and service provider active across Europe. We supply a number of energy providers, public utilities, and CNG filling stations with certified biomethane for use across the energy sector in the power, heating, and transport industries. As a service provider, Landwärme advises customers along the entire biomethane value chain: on everything from biomethane production and supply to remuneration and greenhouse gas quotas.

Join our comprehensive network and put your trust in Landwärme – just like several other biomethane producers, energy providers, and CNG filling stations have done.

Landwärme GmbH
Ungererstraße 40
D-80802 Munich

T +49 | 89 | 24 88 200 10
F +49 | 89 | 24 88 200 01

info@landwaerme.de
www.landwaerme.de